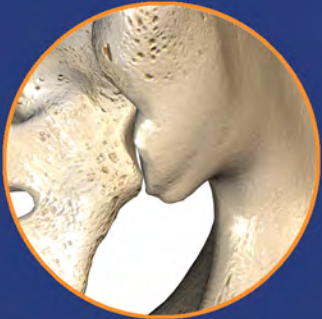
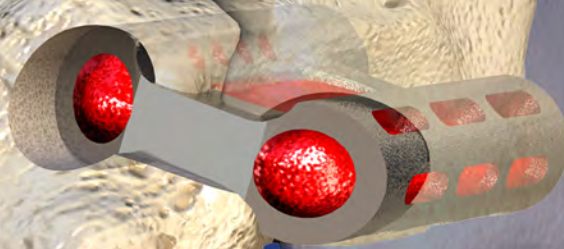


CATAMARANTM

SIJ Fusion System



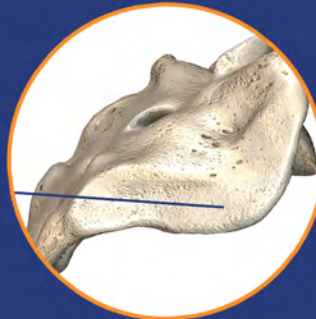
Favorable Entry Point

To facilitate arthrodesis, direct visualization of the SI Joint provides the entry point to decorticate the joint



Posteroinferior Approach

Pathway is angled away from critical neural and vascular structures



Optimized Placement

Designed for maximum fixation in the dense cortical bone of the SI joint, inferior to the dorsal recess



One-and-Done

A single implant spans and fixates the SI joint

CATAMARAN™ SIJ Fusion System

Designed to span the SI joint with one pontoon in the sacrum and one pontoon in the ilium, providing fixation with a single implant. The two pontoons are joined by an osteotome bridge.



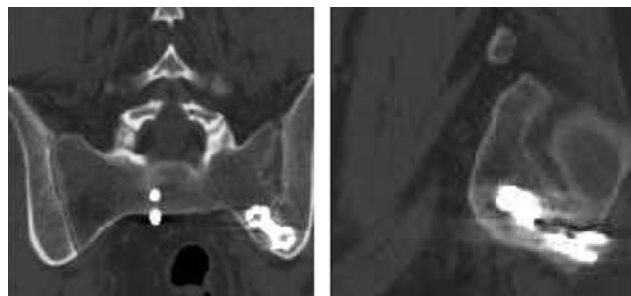
Pontoon Autologous Bone Capacity

Fenestrated pontoons designed to deliver autograft to facilitate fusion.

Implant Length	Barrel Diameter	Total Volume (cc)
30mm	10mm	2.18
40mm	10mm	3.09

Post-Op CT at six months

Axial and sagittal plane sections through a region of the SI joint showing adequate placement in the cortical bone.



Patented and manufactured by:



104 Cooper Ct.
Los Gatos, CA 95032
(408) 649-5760
info@tenonmed.com
www.tenonmed.com

Distributed exclusively in the USA by:



17826 Edison Avenue
Chesterfield, MO 63005
(636) 532-9300
sales@spinesource.com
www.spinesource.com